

# THE LIGHTING BOOK





Dear valued partner and customer,

if any of our products does not meet, or even exceed your quality expectations in any way, please reach out to me personally at :

[dplanche@ndrlighting.com](mailto:dplanche@ndrlighting.com)

# OUR QUALITY PLEDGE



**Don Planche**  
President  
NDR Lighting





## Offering proven service, innovation & reliability

**NDR Lighting** has been manufacturing innovative lighting products for over a decade. We strive to deliver quality, performance, and designs that surpass options currently available in the North American market. Our wide range of products and exceptional customer service help us stay ahead of the competition.

We invite you to browse through our various collections and discover new and exciting lighting ideas to brighten up your day.

**RECESSED LIGHTING 6**

**WRAPS & LINEARS 48**  
**VAPOR TIGHTS 56**

**FLUSH MOUNTS 62**

**HIGH BAYS 68**

**TAPE LIGHTS 72**

**UNDER CABINETS 84**

**OUTDOOR SECURITY 90**

# RECESSED LIGHTING

## A COMPLETE RANGE OF LIGHTING SOLUTIONS

No matter the room or application, NDR Lighting's recessed lighting collections have what you're looking for. Our recessed downlight assortment, with new and innovative LED products, will complement any architectural lighting design for a home or commercial installation.

Our recessed or downlight collections range from 2" to 10" in diameter. With the introduction of LED recessed lighting technology, the installs are no longer limited to a specific housing or "can". LED recessed ceiling lights may be installed in a non-insulated or insulated environment, generally requiring no additional accessories or special boxes.

Our looks and designs are sure to enhance any room or building.





# RAZOR

---

LED | ULTRA THIN RECESSED DOWNLIGHT

NDR FLAGSHIP SERIES

# THE REIGNING KING OF THE GAME.

For years now, our Razor Series has been copied and imitated, but its success was never truly replicated.

Among the first ultra thin die-cast recessed LED downlights, the Razor is our crown jewel and our flagship series.

Offering many size and finish options, it is the clear "no-brainer" for any building or renovation project.



## OVERVIEW

The Razor series' ultra-slim design is perfect for any small space and allows for flexible installation, particularly in confined areas or when facing constraints such as beams, ceiling joists or air ducts.

- Largest assortment of shapes, sizes, finishes and color temperatures
- Widest range of compatible LED dimming options
- Designed for both forward-phase and reverse-phase dimmers at 120V
- Available with 0-10V dimming at 120-277V

## FEATURES

### Selectable CCT

**3-CCT:** 3K, 4K & 5K, available in all styles

**3-CCT27:** 27K, 3K, 4K, available in select styles

### 4 Finishes

White, black, satin chrome and bronze

### Ratings & Certifications

IC rated

Wet location rated

Airtight rated ASTM E283-04

ETL certified for USA and Canada

Fire rated FT4/FT6 wires (UL 2464)

### Warranty & LED Life

5-year warranty and a 50,000-hour LED life

### Easy Installation

Each unit includes a junction box with driver, pressure-fit spring clips and *Quick Connect* wire connectors for fast and easy installation. Heavy-duty mounting clips are designed for sturdy installation and prevent springs from falling off during installation. Large flange feature allows for compensation if hole cut-outs are done incorrectly.



## ULTRA THIN RECESSED DOWNLIGHT | LED

The Razor flat design with low profile allows the light unit to slip under a joist. Whether a home or commercial application, its superior brightness and low power usage offer an ideal lighting solution.

### FINISH



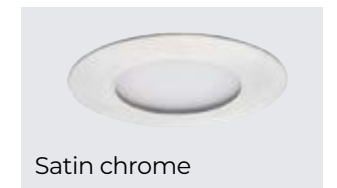
White



Black



Bronze



Satin chrome

### SIZES & MODELS

**3"**  
420 LUMENS  
RZR-CCT-300

**4"\***  
680 LUMENS  
RZR-CCT-400

**5"\***  
780 LUMENS  
RZR-CCT-500

**6"\***  
1000 LUMENS  
RZR-CCT-600

**8"\***  
1450 LUMENS  
RZR-CCT-800

### COLOR TEMPERATURES



**3K•4K•5K**  
SELECTABLE

White Chrome Bronze Black

**27K•3K•4K\*\***  
SELECTABLE

White

\* Model available in a **120-277V** option (0-10V dim)

\*\* Available in 27K, 3K, 4K selectable for the 400, 500, 600 models



# RAZOR•R

LED | LOW PROFILE REGRESSED RECESSED DOWNLIGHT

## FINISH



The Razor-R series takes illumination to the next level, featuring a design and look that create a wash of light to flow throughout, with minimal hot spots on the ceiling. This improved Razor-R provides higher performance resulting in greater lumen output, while increasing the lumen per watt efficiency. Wet location rated.

## SIZES & MODELS

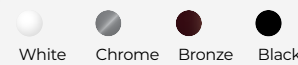
**4"\***  
850 LUMENS  
RZR-CCT-411

**6"\***  
1170 LUMENS  
RZR-CCT-611

## COLOR TEMPERATURES



**3K•4K•5K**  
SELECTABLE



**27K•3K•4K\*\***  
SELECTABLE



\* Model available in a 120-277V option (0-10V dim)  
\*\* Available in 27K, 3K, 4K selectable for the 411 and 611 models



# RAZOR•S

ULTRA THIN RECESSED SQUARE DOWNLIGHT | LED

## FINISH



The contemporary looking Razor-S series has all the benefits of the original Razor. The square design enables unlimited design applications, using cutting-edge installation techniques. All Razor-S units are wet rated and offer a round back feature, making hole cut-outs much easier and quicker than the standard square back versions.

This product has the added feature of being able to slip under a joist for installation.

## SIZES & MODELS

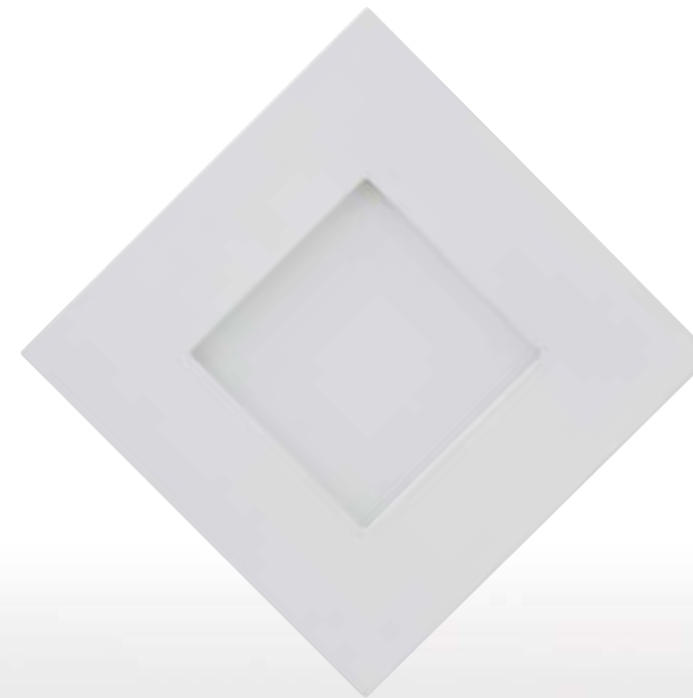
**4"\***  
680 LUMENS  
RZR-CCT-430

**6"\***  
1000 LUMENS  
RZR-CCT-630

## COLOR TEMPERATURES



**3K•4K•5K**  
SELECTABLE



\* Available in a 120-277V option (0-10V dim)



# RAZOR-G

LED | LOW PROFILE GIMBAL RECESSED DOWNLIGHT

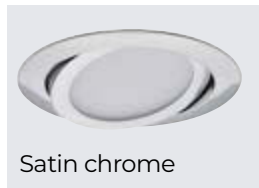
## FINISH



White



Black



Satin chrome

The Razor-G series improves on the original concept by being able to direct the light output where needed. This unit is wet rated and is perfect for highlighting specific needs, such as a sloped ceiling application.



## SIZES & MODELS

**4"**

750 LUMENS  
RZR-CCT-421

**6"**

1100 LUMENS  
RZR-CCT-621

## COLOR TEMPERATURES



**3K•4K•5K\***  
SELECTABLE

\* Available in a 120-277V option (0-10V dim)



Wet locations



Dimmable



IC rated



Airtight rated



Intertek



ENERGY STAR

# RAZOR COMPONENTS

VERSATILE PARTS FOR EASY INSTALLATION



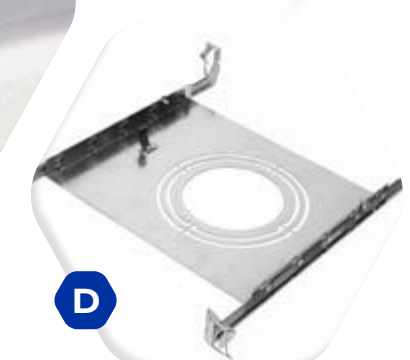
**A**



**B**



**C**



**D**

### A Junction Box

Quick Connect wire connectors for a quick wire connection

Standard 120V dimmable driver; optional 120-277V drivers available as special order (0-10V dim)

### B Tunable Switch on 3-CCT Models

CCT switch located conveniently on the back side of light units and allows for color selection to be made at the final stage of installation

The Razor and Razor-S design has the added feature of being able to slip under a joist for installation

### C Spring Clips & Flanges

Heavy-duty mounting clips are designed for sturdy installation and prevent springs from falling off during installation

Large flange feature allows for compensation if hole cut-outs are done incorrectly

### D Mounting Plates with Hanger Bars

Recommended for new construction or suspended ceiling applications



# RAZOR•FR

LED | FIRE RATED DOWNLIGHT



FIRE RATED

# THINK WITHOUT THE BOX.

Our new, patented Fire Rated Razor series doesn't need an additional metal box.

You save on installation time *and* you save on materials. What's not to like?

Ultra thin or recessed, 4-inch or 6-inch, NDR's Fire Rated Razor Series has you covered.

**FIRE-SAFE™**  
TECHNOLOGY / TECHNOLOGIE



## OVERVIEW

The Razor Fire Rated series comes with a **Certified 2-Hour Fire Rating** and a trademark **Fire Safe™** back plate which provides a reinforced and heat-resistant steel casing. This unique design and technology has been patented and offers an affordable solution in applications that require up to a 2-hour fire rating.

In conjunction with fire rating building codes for ceiling materials (example: type-X gypsum), no additional accessories are needed. Simply cut the correct hole diameter, wire the junction box, and then install the light unit. Installation is complete!

## FEATURES

### Selectable CCT

3K, 4K & 5K, available in all styles

### 1 Finish

White

### Ratings & Certifications

2HR Fire rating  
UL 263, ASTM E119, CAN ULC S101  
IC rated  
Wet location rated  
Airtight rated ASTM E283-04  
ETL certified for USA and Canada  
Fire rated FT6 wires (CL2P)

### Warranty & LED lifetime

5-year warranty and a 50,000-hour LED life

### Easy installation

Each unit includes a junction box with a **commercial-grade driver**, pressure-fit spring clips and *Quick Connect* wire connectors for fast and easy installation.

**Heavy duty commercial-grade steel spring clips** designed to withstand excessive heat and secure the Razor in place. The clips are designed for easy installation through one or two layers of gypsum.



## FIRE RATED RECESSED DOWNLIGHT | LED

## FEATURES

2-Hour fire rated with **FIRE-SAFE™** technology providing a reinforced and heat resistant steel casing

Selectable color temperature: **3K, 4K & 5K**

Junction box with commercial-grade driver included

Easy installation – **NO ADDITIONAL BOX REQUIRED**

CRI >90

## FINISH



White



White regressed

## SIZES & MODELS

**4"**

**650 LUMENS**  
RZR-CCT-FR400

**4"**

**800 LUMENS**  
RZR-CCT-FR411

**6"**

**950 LUMENS**  
RZR-CCT-FR600

**6"**

**1020 LUMENS**  
RZR-CCT-FR611

**6"**

**1500 LUMENS**  
RZR-CCT-FR615

## COLOR TEMPERATURES



**3K•4K•5K**  
SELECTABLE

\* Available in a **120-277V** option (0-10V dim)



### CCT Switch



Wet locations



Dimmable



IC rated



Airtight rated



JAB-2022



Intertek



ENERGY STAR



### FINISH



White

### SIZES & MODELS

**4"**

810 LUMENS  
RZR-RETRO-440-WH

**6"**

1055 LUMENS  
RZR-RETRO-640-WH

### COLOR TEMPERATURES



**27K•3K•4K**  
SELECTABLE

The Retro is meant to replicate the exact look of a 6" Razor (flat design) for renovation projects where a can light is replaced by an LED light without having to remove the existing installation.



E26 Med base adaptor included (4" & 6")



GU10 adaptor included (4" only)



**A**  
**Razor lookalike**  
Identical aesthetics to the Razor Series 6" (flat design)

**B**  
**Die-cast**  
Strong aluminum die-cast trim/heatsink design

**C**  
**Spring Clips**  
Spring steel clips that fit most 6" and 6.5" housings

**D**  
**E26 Adaptor**  
E26 MED base screw adaptor



## OVERVIEW

The Orbit series offers a high-performance LED recessed downlight designed with sleek lines for a contemporary look. The integrated COB technology offers low-energy, long lasting performance with outstanding light output up to 1700 lumens. It is available with CRI80 (all models) or CRI90 (select models).

This collection is suitable for residential or commercial applications designed with a regressed LED light source providing an anti-glare lighting solution.

Its 36-degree focused beam angle and a 360-degree rotation will answer many lighting needs.

The body is constructed of die-cast aluminum for precise functionality and maximum heat dissipation. For quick and easy installation, the unit comes with pressure-fit spring clips and quick connect wire connectors. A dimmable 120V driver is included for residential applications. It is also available in a 277V (0-10V dimmable) driver for commercial applications that may require this format.

## FEATURES

### 4 Color Temperatures

27K, 3K, 4K & 5K

### 4 Finishes

White, black, satin chrome and bronze

### Focused Spot

True directional 36° beam with full 360° rotation and 27° gimbal angle

### Industry Leading Performance

Stronger than traditional recessed & general LED downlights

### Glare control

Standard regressed and deep regressed options

### Ratings and Certifications

IC rated  
Wet location rated  
Airtight rated ASTM E283-04  
ETL certified for USA and Canada  
Fire rated FT6 wires (UL 2464)

### Warranty & LED Life

5-year warranty and a 50,000-hour LED life

### Easy Installation

Each unit includes a junction box with driver, pressure-fit spring clips and *Quick Connect* wire connectors for fast and easy installation

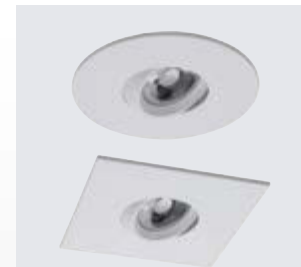


## HIGH PERFORMANCE RECESSED DOWNLIGHT | LED

### KEY FEATURES

Light output up to 850 LM  
Regressed LED light source  
Round or square shapes  
High-end design  
36° focused spot with a 360° rotation  
Voltage: 120V, optional 120-277V (0-10V dim)

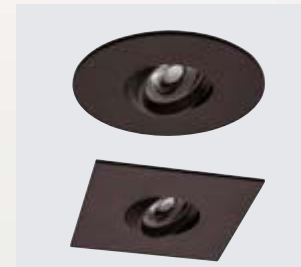
### FINISH



White



Black



Bronze



Satin chrome

PATENTED TECHNOLOGY



VOTED #1  
INDUSTRY  
LEADING LUMEN  
OUTPUT OF  
**850**  
LUMENS

### ROUND MODEL SIZES

**2"**

700 LUMENS  
OB200

**3"**

850 LUMENS  
OB300

**4"**

850 LUMENS  
OB400

### SQUARE MODEL SIZES

**3"**

850 LUMENS  
OB330

**4"**

850 LUMENS  
OB430

### COLOR TEMPERATURES

**27K\*·3K·4K·5K\***

\* Available in select sizes and finishes



Wet locations



Dimmable



IC rated



Airtight rated





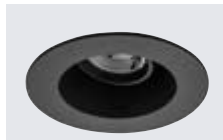
# ORBIT•R

## LED | HIGH PERFORMANCE REGRESSED RECESSED DOWNLIGHT

### FEATURES



White



Black



Bronze

This collection has taken all the features of our traditional Orbit series and combined it with **deep regressed design**. The deep regressed design puts the light unit even further back into the fixture than our traditional Orbit series, thus eliminating all possible light glare. Whether it be a remodel or new construction application, the Orbit-R series will bring a high-end look at an affordable price to any project.

### KEY FEATURES

- Light output up to 1700 LM
- Deep regressed LED light source
- High-end design with glare control feature
- 36° focused spot with a 360° rotation
- 6" model has a compact body design to allow installations into a 5" or 6" hole size
- Voltage: 120V, optional 120-277V (0-10V dim)

### SIZES & MODELS

**4"**

850 LUMENS  
OB410

**6"**

1700 LUMENS  
OB610

### COLOR TEMPERATURES

**3K•4K•5K**

PATENTED TECHNOLOGY



VOTED #1  
INDUSTRY  
LEADING LUMEN  
OUTPUT OF  
**1700**  
LUMENS



Wet locations



Dimmable



IC rated



Airtight rated



Intertek



ENERGY STAR

# ORBIT•B

## STEPPED BAFFLE RECESSED DOWNLIGHT | LED

### FINISH



White



Black

The Orbit-B is a regressed downlight with an elegant stepped baffled cone. Its fixed lens throws a rich and narrow light beam that cranks out up to 800 lumens. Offered in either white or black finish, it's sure to bring a subtle and timeless look to any room where it's installed.

### SIZES & MODELS

**2"**

700 LUMENS  
OB214-CCT27

**4"**

800 LUMENS  
OB414-CCT27

### KEY FEATURES

- Light output up to 800 LM
- Regressed LED light source
- Elegant stepped baffle cone
- Selectable color temperature : 27K, 3K & 4K
- CRI >90
- Voltage: 120V, optional 120-277V (0-10V dim)

### COLOR TEMPERATURES



**27K•3K•4K**  
SELECTABLE



Wet locations



Dimmable



IC rated



Airtight rated



Intertek



ENERGY STAR

# ORBIT COMPONENTS

VERSATILE PARTS FOR EASY INSTALLATION



## A Mounting Plates with Hanger Bars

Recommended for new construction or suspended ceiling applications

## B Spring Clips & Flanges

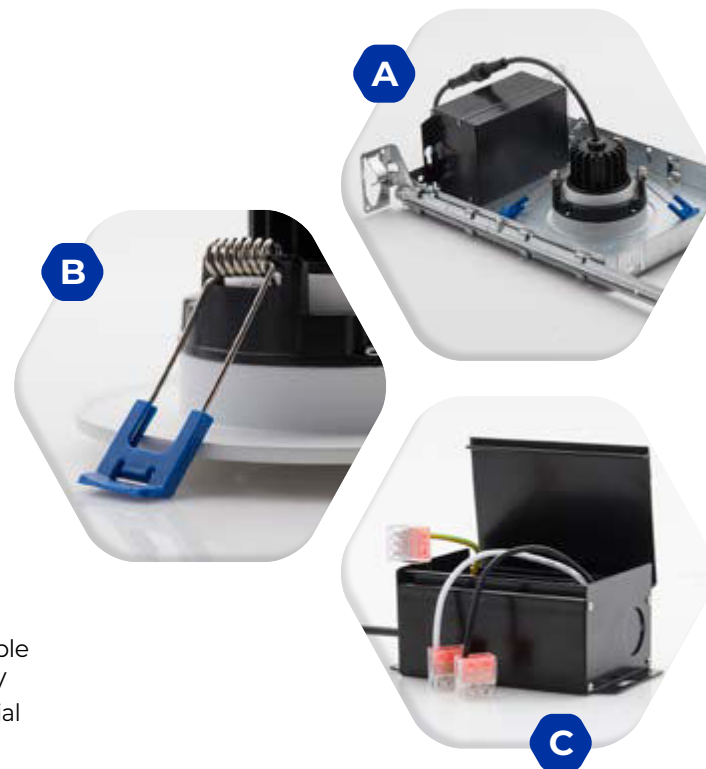
Heavy-duty mounting clips are designed for sturdy installation and prevent springs from falling off during installation

Large flange feature allows for compensation if hole cut-outs are done incorrectly

## C Junction Box

Quick Connect wire connectors for a quick wire connection

Standard 120V dimmable driver; optional 120-277V drivers available as special order (0-10V dim)

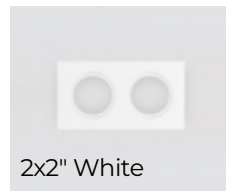




# MULTIPLATES

## MULTIPLE PLATES FOR ORBIT PRODUCT SERIES

### FINISH



2x2" White



3x2" White



2x3" White



3x3" White

### KEY FEATURES

Easily converts single position directional Orbit into a recessed multiple

Modern & contemporary style linear gimbal recessed fixture

### SIZE & MODELS

#### 2X2"

2 ORBITS 2"  
OB200MFP-2WH

#### 3X2"

3 ORBITS 2"  
OB200MFP-3WH

#### 2X3"

2 ORBITS 3"  
OB300MFP-2WH

#### 3X3"

3 ORBITS 3"  
OB300MFP-3WH



\* Orbit LED downlights not included.



# CLASSIC COLLECTION

LED | NDR RIDGE & EDGE DOWNLIGHTS

# TIMELESS LOOK MEETS FUTURE TECH.



We're proudly bringing back two acclaimed classics with a definitive retro look, but make no mistake : under the hood, you will still find our high quality, signature third millennium LED technology.

The Ridge is a stepped baffle classic design and the Edge is a new and improved favourite packing a 1100 lumens punch.



Lighting is getting its groove back. The all-new Ridge Series is NDR's effort to bring back the timeless stepped baffle design of old and upgrade it to our industry-leading, state-of-the-art LED technology.

For residential or commercial projects, or for anything in between, the Ridge is sure to create an inviting space with a hint of a retro vibe.

Built with a die-cast aluminum housing, this flood beam LED downlight installs like a breeze and offers an anti-glare deep regressed design that's very easy on the eyes.

With all of these killer features, opting for the Ridge is the easiest decision you will ever make, leaving you time to choose from its many CCT, size and finish possible combinations.

### FEATURES

#### Selectable CCT

27K, 3K & 4K available in all styles

#### 2 Finishes

White and black

#### Die-cast

Superior Construction from Die-cast Aluminum

#### Anti-Glare

Anti-glare 1.25" (4") and 1.5" (6") Classic Stepped Baffle Design

#### High Color Rendering

Color Rendering Index (CRI) above 90

#### Warranty & LED Life

5-year warranty and a 50,000-hour LED life

#### Easy Installation

Each unit includes a junction box with driver, pressure-fit spring clips and *Quick Connect* wire connectors for fast and easy installation



### KEY FEATURES

- Light output up to 1000 LM
- Deep regressed LED light source
- Classic stepped baffle design
- Selectable color temperature: 27K-3K-4K
- 90 CRI
- Voltage: 120V, optional 120-277V (0-10V dim)

### FINISH



### SIZES & MODELS

4"

750 LUMENS  
RID-CCT27-414

6"

1000 LUMENS  
RID-CCT27-614

27K•3K•4K  
SELECTABLE



### COLOR TEMPERATURES



Wet locations



Dimmable



IC rated



Airtight rated



## OVERVIEW

Using state-of-the-art technology, the Edge was designed with performance in mind and allows for quick installation in both residential and commercial applications. Its superior brightness and low power usage offer an ideal lighting solution.

Integrated COB (chip on board) technology offers low-energy, long lasting performance with outstanding light output.

## FEATURES

### Selectable CCT

3-CCT: 27K, 3K & 4K

### 2 Finishes

White & black

### High Performance

Outstanding performance up to 1100 lumens

### 360° Directional

Once installed, you can simply swivel The inner gimbal 360 degrees to aim your beam spread in the desired direction

### Glare Control

The light source is regressed by more than 1.25 inches, eliminating any ceiling glare

### Ratings & Certifications

Wet location rated

IC rated

Airtight rated ASTM E283-04

ETL certified for USA and Canada

Fire rated FT6 wires (UL 2464)

### Warranty & Life

5-year warranty

50,000-hour LED life

### Easy Installation

Each unit includes a junction box with driver, pressure-fit spring clips and *Quick Connect* wire connectors for fast and easy installation



## HIGH PERFORMANCE RECESSED DOWNLIGHT | LED

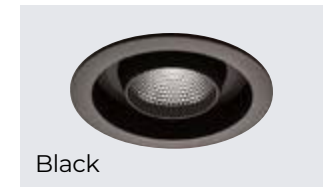
### KEY FEATURES

Traditional regressed eyeball design  
Residential or commercial application  
Regressed feature eliminates all possible glare  
Voltage: 120V, optional 120-277V (0-10V dim)  
38° focused spot with a 360° rotation  
CRI >90

### FINISH



White



Black

### SIZES & MODELS

4"

1000 LUMENS\*  
EG400- CCT27  
\*based on 2700K

### COLOR TEMPERATURES



27K•3K•4K  
SELECTABLE



Wet locations



Dimmable



IC rated



Airtight rated

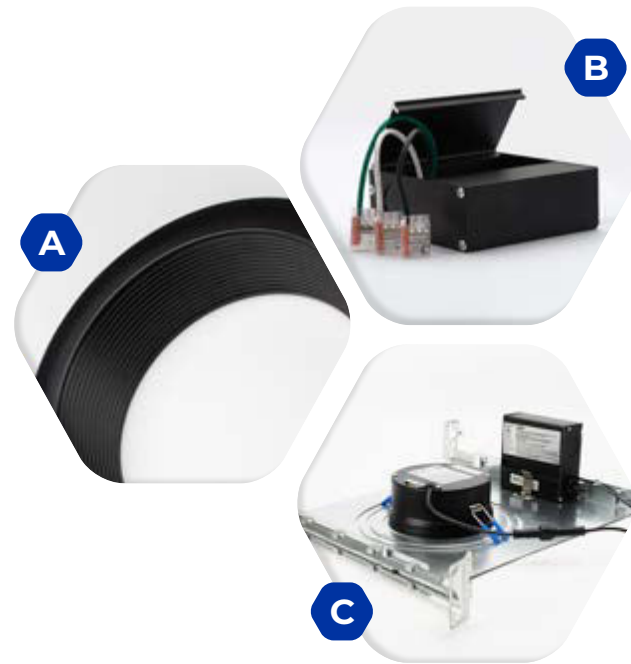


Intertek ENERGY STAR



# RIDGE COMPONENTS

VERSATILE PARTS FOR EASY INSTALLATION



**A**  
**Deep Stepped Baffle**  
Classic deep stepped baffle design from seamless one-piece die-cast aluminum construction

**B**  
**Junction Box**  
*Quick Connect* wire connectors for a quick wire connection  
Standard 120V dimmable driver; optional 120-277V drivers available as special order (0-10V dim)

**C**  
**Mounting Plates with Hanger Bars**  
Recommended for new construction or suspended ceiling applications

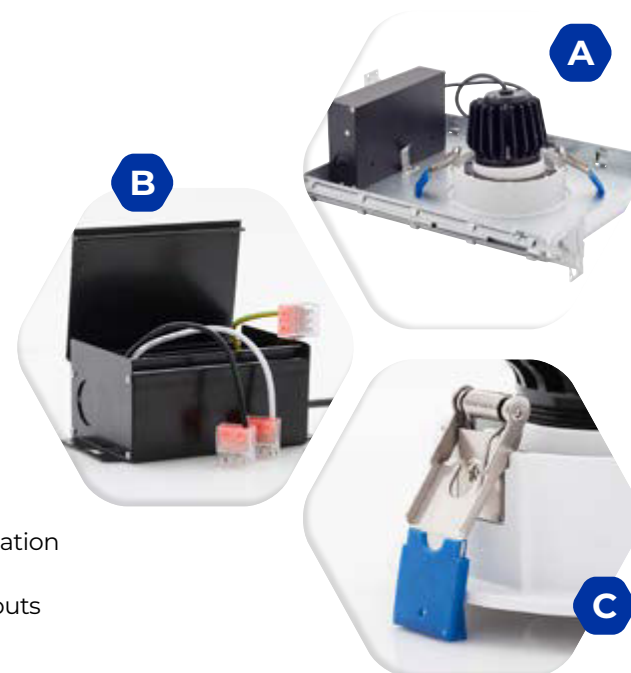
# EDGE COMPONENTS

VERSATILE PARTS FOR EASY INSTALLATION

**A**  
**Mounting Plates with Hanger Bars**  
Recommended for new construction or suspended ceiling applications

**B**  
**Junction Box**  
*Quick Connect* wire connectors for a quick wire connection  
Standard 120V dimmable driver; with an optional 120-277V (0-10V dim)

**C**  
**Spring Clips & Flanges**  
Heavy-duty mounting clips are designed for sturdy installation and prevent springs from falling off during installation  
Large flange feature allows for compensation if hole cut-outs are done incorrectly



## OVERVIEW

The Apex series is a high-performance LED recessed downlight which comes with pressure-fit spring clips for an easy installation. Integrated LED technology offers low-energy, long lasting performance with outstanding light outputs up to 4000 lumens.

The body is constructed of die-cast aluminum in 3", 4", 6", 8" & 10" trim sizes with a junction box

manufactured in extruded aluminum. The Apex series is ideal for replacement of existing CFL/PL, fluorescent or incandescent fixtures.

Well adapted for any new, remodel or old commercial applications. For easy and quick installation, the unit comes with pressure-fit spring clips, *Quick Connect* wire connectors and is IC rated.

## FEATURES

### 3 Color Temperatures

3K, 4K & 5K

### 2 Finishes

White finish with white reflector or white finish with chrome reflector

### General Flood Reflector

High quality polycarbonate 80 degree reflector designed for maximum reflection efficiency  
Deep regressed diffuser to eliminate the glare from the high-powered LED  
Available with white or chrome reflector

### Ratings & Certifications

IC rated  
Damp location rated  
ETL certified for USA and Canada  
Fire rated FT6 wires (UL 2464)

### Warranty & LED Life

5-year warranty and a 50,000-hour LED life

### Easy Installation

Each unit includes a junction box with driver, pressure-fit spring clips and *Quick Connect* wire connectors for fast and easy installation



## HIGH PERFORMANCE RECESSED DOWNLIGHT | LED

Using state-of-the-art technology, the Apex series was designed with performance in mind and allows for quick installation in both commercial and residential applications. Its superior brightness and low power usage make it the ideal lighting solution.

It features a 0-10V dimmable driver (120-277V). An optional 120V or 347V dimmable driver is available.

## FINISH



White & white reflector



White & chrome reflector

## SIZES & MODELS

**3"**

600 LUMENS  
APX-310

**4"**

870 LUMENS  
APX-410

**6"**

1660 LUMENS  
APX-610

**8"**

2630 LUMENS  
APX-810

**10"**

4000 LUMENS  
APX-1010

## COLOR TEMPERATURES

**3K•4K•5K**



Damp locations



Dimmable



IC rated



Airtight rated



Intertek ENERGY STAR



# APEX COMPONENTS

VERSATILE PARTS FOR EASY INSTALLATION



## A Mounting Plates with Hanger Bars

Recommended for new construction  
or suspended ceiling applications



## B Spring Clips & Flanges

Heavy-duty mounting clips are designed for  
sturdy installation and prevent springs from  
falling off during installation



Large flange feature allows for compensation  
if hole cut-outs are done incorrectly

## C Junction Box

Quick Connect wire connectors for a quick  
wire connection



Standard 120-277V (0-10V dimmable)  
driver; with an optional 120V (TRIAC dim) or  
120-347V (0-10V dim) driver available as  
a special order



## OVERVIEW

The Triad Series is a versatile lighting product offering the option of varied color temperature, wattage, and lumen output level, in one single unit.

Whether it is a remodel or new construction installation, this unit is well suited for indoor or outdoor in various commercial applications. These may include property management, healthcare, retail, office, hospitality and many more.

## FEATURES

### Selectable CCT

27K, 3K, 35K, 4K & 5K

### 1 Finish

White

### Flexdrive Technology

Flexdrive technology allows for varied wattage and light output  
0-10V Dimming

### Ratings & Certifications

IC rated  
Wet location rated  
Airtight rated ASTM E283-04  
ETL certified for USA and Canada

### Warranty & LED Life

5-year warranty and a 50,000-hour LED life

### Easy Installation

Each unit includes an integrated driver, pressure-fit spring clips, and a 24" BX cable for fast and easy installation into a junction box.

### CRI >90

### Selectable Color Temperature, Watts & Lumens



## FLEXDRIVE TECHNOLOGY RECESSED DOWNLIGHT | LED

## KEY FEATURES

Flexdrive technology allows for varied wattage & light output

Aluminum construction, ideal for indoor or outdoor, remodel or new construction

Includes a handy installation cable wire; no worries holding the luminaire while wiring into the junction box

## FINISH



White

## SIZES & MODELS

**6"**

900/1350/1850  
LUMENS  
TBX-CCT-614

**8"**

1020/1700/2400  
LUMENS  
TBX-CCT-814

## COLOR TEMPERATURES



**27K•3K•35K•4K•5K**  
SELECTABLE



Wet locations



Dimmable



IC rated



Airtight rated





# TRIAD COMPONENTS

VERSATILE PARTS FOR EASY INSTALLATION



## **A** Mounting Plates with Hanger Bars

Recommended for new construction  
or suspended ceiling applications

## **B** Spring Clips & Flanges

Heavy-duty mounting clips are designed  
for sturdy installation

Extra large flange feature makes the Triad  
series perfect for remodel installations  
with varied hole sizes

## **C** Cable Wire

A handy installation cable wire eliminates  
the need of holding the luminaire while  
wiring into the junction box



# RECESSED LIGHTING

## ACCESSORIES

### MOUNTING PLATES

Versatile square mounting plate allows for installation of most models of NDR Lighting recessed lighting products.



### ADJUSTABLE MOUNTING PLATES

Versatile adjustable mounting plate allows for installation of most models of NDR Lighting recessed lighting products.



Inch ruler for easy installation

### MOUNTING PLATES WITH ADJUSTABLE HANGER BARS

Versatile mounting plate with adjustable hanger bars allows for installation of all models of NDR Lighting recessed lighting products.



Mounting clip to secure driver box

# RECESSED LIGHTING

## ACCESSORIES



### GOOF RINGS

This Goof Ring is used when the ceiling hole is wider than the retrofit light unit being installed.

### RAZOR CONNECTING CABLE

These connecting cables are for use with the NDR Lighting Razor Series. They allow for greater flexibility in designing custom layout needs.



### ORBIT / EDGE / APEX CONNECTING CABLE

This connecting cable is for use with the NDR Lighting Apex, Edge and Orbit Series. It allows for greater flexibility in designing custom layout needs.





# WRAPS & LINEARS

## CEILING & WALL LIGHT SOLUTIONS

Our Wrap & Linear collections boast the most efficient LED technology, combined with a modern design.

Our Wrap & Linear fixtures have the flexibility to be installed on either walls or ceilings. They are ideal for many applications, such as corridors, laundry rooms, kitchens, break rooms, utility work areas and stairways.

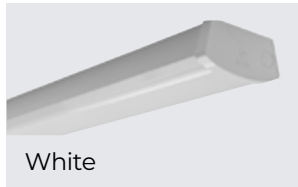
Our assortment of Wrap & Linear LED light fixtures come in a variety of sizes and styles and are designed for a quick and easy installation.



# COBRA

LED | LOW PROFILE WRAPAROUND

## FINISH



White

The Cobra series is a low-profile LED wraparound with a frosted diffuser and **high-end reflector** providing widespread, uniform illumination.

Ideal for many applications including corridors, laundry rooms, kitchens, breakrooms, utility work areas and stairways.

## SIZES & MODELS

**2'**

2000 LUMENS  
WLLED-24

**4'**

4000 LUMENS  
WLLED-48

## COLOR TEMPERATURE

**4K**

### Internal Junction Box



Large internal junction box

## KEY FEATURES

Mounts flush to wall or ceiling

### Internal junction box

Integrated LED – no bulbs required

Maintenance free LED light

Knockouts on endcaps or back plate

Voltage: 120 - 277V

Hardwire Only

# COBRAPLUS

LOW PROFILE WRAPAROUND | LED

## FINISH



White

With 50% more lumens than our regular Cobra, the CobraPlus' **FlexDrive technology** also allows for variable wattage settings. Ideal for many applications including corridors, laundry rooms, kitchens, break rooms, utility work areas and stairways. This versatile linear light packs much more light output and customization options than any similar linear fixture on the market.

## KEY FEATURES

Mounts flush to wall or ceiling

### Internal junction box

**FlexDrive technology** allows :

- Variable wattage output
- Selectable color temperature

Voltage: 120 - 277V

Hardwire Only

## SIZES & MODELS

**2'**

3500 LUMENS  
WLLED24-CCT-WH

**4'**

6000 LUMENS  
WLLED48-CCT-WH

## COLOR TEMPERATURES



**3K•4K•5K**  
SELECTABLE

### CCT Switch

For selectable color temperature



### Internal Junction Box



### Wattage Switch

Variable wattage output





# PYTHON

LED | LOW PROFILE STRIP LIGHT

NDR INTELLIGENT DRIVER

# PYTHON JUST DOES IT ALL.

Versatility is Python's strong suit. Inside of its timeless and simple form factor you will find a whole lot of very useful technology. Infrared motion sensor, intelligent driver and NDR's *FlexDrive technology* make this low-profile strip light the right solution to so many of your lighting needs. The Python will effortlessly sneak into any space, no matter how constrained.



NDR Intelligent Driver



Infrared motion sensor with 13' to 19' detection range.



Motion sensor standby mode switch: OFF • 0% • 30% • 50%.



3K • 35K • 4K selectable color temperature switch.



**FlexDrive** TECHNOLOGY • TECHNOLOGIE  
FlexDrive technology variable wattage output switch.



# VIPER CCT

LED | LOW PROFILE STRIP

## FINISH



White

The Viper CCT is an elegant and sophisticated low-profile LED strip light equipped with an infrared motion sensor.

Ideal for many applications including corridors, laundry rooms, workshops, utility work areas, closet spaces and stairways. You will find it most useful in areas where you don't spend a lot of time and often need both your hands to be free.

## SIZES & MODELS

**2'**

1600 LUMENS  
LSLMS24-CCT-WH

**4'**

2600 LUMENS  
LSLMS48-CCT-WH

## COLOR TEMPERATURES



**3K•35K•4K**  
SELECTABLE

## KEY FEATURES

- Mounts flush to wall or ceiling
- PIR Motion Sensor
- ON / OFF override switch inside
- Selectable color temperature
- Knock-outs on endcaps or back plate
- Voltage: 120 - 277V
- Hardwire Only

### PIR Motion Sensor

ON / Off override switch inside



Detection range:  
4m-6m (13'-19')

### Sleek & Compact Design

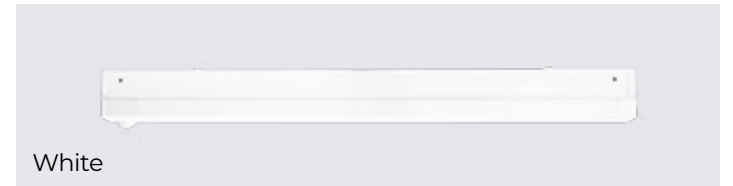
Viper CCT's design allows for installation in limited spaces.



# PYTHON

LOW PROFILE STRIP | LED

## FINISH



White

Our Python is the most versatile product in our entire lineup. Its motion sensor combined with its **Intelligent Driver with FlexDrive technology** allows it to fit anywhere and everywhere.

In hallways, stairwells, corridors, storage rooms, garages or underground parking lots, the Python can be used in residential and commercial settings alike.

## KEY FEATURES

- Intelligent Driver**
  - 0% / 30% / 50% standby mode settings
  - PIR motion sensor
  - Variable wattage output
  - Selectable color temperature
- Voltage: 120-277V
- 0-10V Dimmable

## SIZES & MODELS

**2'**

3000 LUMENS  
WSLMS24-CCT-WH

**4'**

5175 LUMENS  
WSLMS48-CCT-WH

## COLOR TEMPERATURES



**3K•35K•4K**  
SELECTABLE

### Intelligent Driver

- Allows for selectable :
  - Standby Mode Settings
  - Color Temperature
  - Wattage

### PIR Motion Sensor

4-setting switch inside





# VAPOR TIGHTS

## KEEP THE ELEMENTS OUT WITH OUR NEW VAPOR TIGHTS

When the job calls for heavy-duty lights that will stand tall against the elements, NDR Lighting's line of Vapor Tight LED lights are the solution you need.

Our Mamba is offered in a 2-foot or a 4-foot linear form factor and is NSF rated, to be used in the food processing industry. It's robust stainless steel clips are factory-installed for a faster, hassle-free installation experience on the job site.

The Boa is a compact but powerful dome-shaped fixture that can be installed in the most difficult spaces and still flood a room with impressive illumination.

Indoors or outdoors, in a commercial or industrial setting, the NDR Vapor Tights always deliver.





# BOA

LED | VAPOR TIGHT FLUSH MOUNT

8 INCHES, 6000 LUMENS

# THE BOA PACKS A SERIOUS PUNCH.

Whether it be dust, water or even bugs, with its IP67 rating, the NDR Boa keeps absolutely, positively everything out. Its silicone channel ensures a 100% efficient seal that shuts out the elements.

The 8" Boa, or its 5" sibling are highly compact and powerful options for all your commercial or industrial vapor tight needs, and it plays nice with your 1/2" and 3/4" conduits.





# BOA

## LED | VAPOR TIGHT FLUSH MOUNT

### FINISH



Grey

The NDR Boa flush mount is our compact & powerful solution for all your vapor tight needs. Anywhere a 2-foot or 4-foot linear fixture won't do, the Boa gets the job done, and more.

It can easily be installed inside, for stairwells, barns and warehouses, or outside, for marinas and multi-level parking garages among others. Its **IP67 rating** ensures no dust, water or bugs will ever get in.

### SIZES & MODELS

**5"**

3500 LUMENS  
VTR500-CCT-GR

**8"**

6000 LUMENS  
VTR800-CCT-GR

### COLOR TEMPERATURES



**35K•4K•5K**  
SELECTABLE



### Food Rated

Suitable for use in the food processing industry

### KEY FEATURES

#### Compact & Powerful:

- 6000 lumens (8" model)
- 3500 lumens (5" model)

Mounts flush to wall or ceiling

0-10V Dimmable

Cold storage rated

**IP67 Rating**

**Voltage: 120 - 347V**

1/2" & 3/4" conduit options



### IP67 Rating

Silicone channel keeps dust & water out 100%



# MAMBA

## VAPOR TIGHT LINEAR STRIP | LED

### FINISH



Grey

Rated for use in the food processing industry, you can install the Mamba in any space where water and dust need to stay out of your lighting fixtures. Rugged and versatile, this vapor tight linear light offers variable wattage through NDR's proprietary **FlexDrive technology**. Whether for an indoor parking lot, a poultry farm or any industrial work space, the Mamba will be the right solution for your needs.

### KEY FEATURES

0-10V dimmable

IP66 rated

**FlexDrive technology** allows:

- Variable wattage output
- Selectable color temperature

Knockouts on endcaps

**Voltage: 120 - 347V**

**DLC Premium Listed**



### Food Rated

Suitable for use in the food processing industry

### SIZES & MODELS

**2'**

3000 LUMENS  
VTL24-CCT-GR

**4'**

5400 LUMENS  
VTL48-CCT-GR

### COLOR TEMPERATURES



**35K•4K•5K**  
SELECTABLE



### 150 lumens per Watt

Mamba offers very high energy efficiency. DLC Premium listed.



### Stainless Steel Clips

Every NDR Mamba includes factory-installed high quality stainless steel clips.



# FLUSH MOUNTS

## CEILING LIGHT SOLUTIONS

Our LED ceiling flush mounts offer the latest energy saving and technology features. They provide an affordable and stylish design that will complement a wide assortment of lighting applications.

Available in various styles, sizes and designs, our LED flush mount ceiling lights are designed for quick and easy installation, ensuring peace of mind with years of maintenance-free functionality.

Whether you have a hallway, closet, bedroom or any other location that requires high-performance, energy saving illumination, the NDR flush mount collections are sure to surpass your expectations.





# AURA

## LED | LOW PROFILE FLUSH MOUNT

### FINISH



White

### SIZES & MODELS

**7"**

1000 LUMENS  
CL70

**11"**

2000 LUMENS  
CL110

### COLOR TEMPERATURES

**3K-4K**

The Aura low-profile LED flush mounts provide general illumination suitable for indoor or outdoor residential and commercial applications.

With a 54,000-hour maintenance-free life, the Aura series delivers reliability along with bright, high quality illumination.

These flush mounts can be used in closets, hallways, bedrooms, offices, utility work areas, soffits and many other places.

### KEY FEATURES

- Wet location certified
- Industry leading lumen output
- Die-cast aluminum construction
- Tool-free, press-release removable polycarbonate diffuser
- Quick & easy to install on standard 3" or 4" junction box
- Integrated driver on board, 120V

# AZURE

## DESIGNER SERIES FLUSH MOUNT | LED

### FINISH



White

### SIZES & MODELS

**12"**

1500 LUMENS  
FM120 & FM-MS120

**16"**

2000 LUMENS  
FM160

### COLOR TEMPERATURES

**3K-4K**

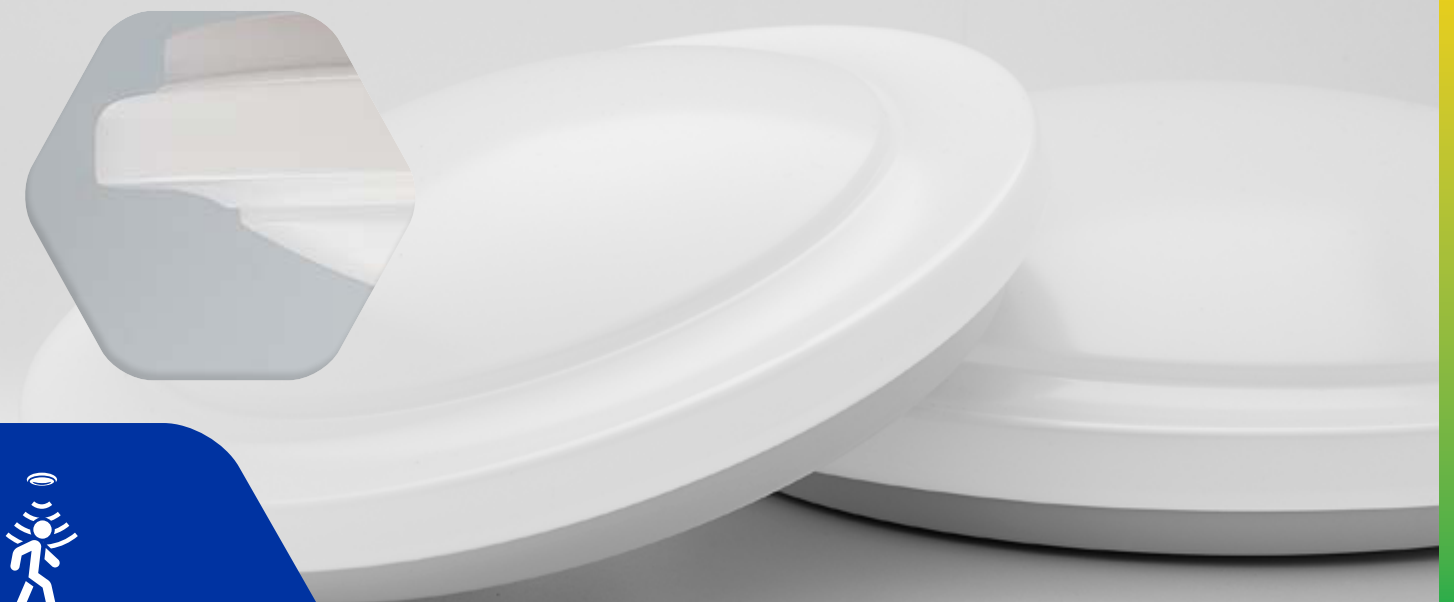
The Azure series of LED flush mount fixtures offers an affordable and stylish design that will complement a varied assortment of lighting applications.

The diffuser has a unique stylish design and may be removed easily for installation and cleaning. Ideal for use in closets, foyers, hallways, bedrooms, offices, utility work areas, stairways, and many other rooms in the house or work place environment.

### KEY FEATURES

- Industry-leading lumen output
- Innovative diffuser design
- Tool-free removable polycarbonate diffuser
- Quick & easy to install on standard 3" or 4" junction box
- Integrated driver on board, 120V
- 12" Model is also available with a microwave motion sensor (non-dimmable)

### Designer Series



12" AVAILABLE  
WITH MICROWAVE  
**MOTION SENSOR**  
DETECTION RANGE:  
10' (3M) - 15' (4.5M)



# APOLLO

LED | FLUSH MOUNT

## FINISH



White

The Apollo series is an affordable LED solution for any new construction or remodel application. Its low profile offers a stylish design with low energy costs.

Provides general LED illumination in residential and light commercial applications. Ideal for use in closets, hallways, pantries, utility areas and much more.

## SIZES & MODELS

**6"**

650 LUMENS  
FM60

**6"**

with motion sensor  
650 LUMENS  
FM-MS60

## KEY FEATURES

- Removable diffuser
- Ceiling or wall mount, rated for closet spaces
- Available with or without PIR motion sensor**
- Quick & easy to install on standard 3" or 4" junction box
- The non-motion version is dimmable
- Integrated driver on board, 120V

## COLOR TEMPERATURES

**3K-4K**

PIR Motion Sensor



AVAILABLE WITH PIR  
**MOTION SENSOR**  
DETECTION RANGE:  
3' (1M) - 6' (2M)



# APOLLO 2

FLUSH MOUNT | LED

## FINISH



White



White with motion sensor

The Apollo 2 series is an affordable LED solution for any new construction or remodel application. Its low-profile offers a stylish design with low energy costs.

Provides general LED illumination in residential and light commercial applications. Ideal for use in closets, hallways, pantries, utility areas and more.

## KEY FEATURES

- Removable diffuser
- Ceiling or wall mount, rated for closet spaces
- Available with or without PIR motion sensor**
- Quick & easy to install on standard 4" junction box
- The non-motion version is dimmable
- Integrated driver on board, 120V

## SIZES & MODELS

**6"**

1000 LUMENS  
FM70

**6"**

with motion sensor  
1000 LUMENS  
FM-MS70

## COLOR TEMPERATURES

**3K-4K**

PIR Motion Sensor



AVAILABLE WITH PIR  
**MOTION SENSOR**  
DETECTION RANGE:  
3' (1M) - 6' (2M)





## COMMERCIAL & INDUSTRIAL LIGHTING SOLUTIONS

In today's industrial and commercial environments, the lighting solutions requirements are led by high lumen output and low energy consumption needs.

At NDR Lighting, our high bay product goes even further than market needs. Combined with high lumen output and low energy costs, the collection also offers longer life LED chips, stylish design and market innovation.

All this to deliver a product that is an industry leader to encourage a safe and productive work environment. Our products are well suited for commercial, retail, warehousing, manufacturing or any large indoor spaces that require high levels of lighting.

# HIGH BAYS



## OVERVIEW

The Eagle series offers a stylish high bay lighting design, combined with high light output and low energy costs.

Added to this high-performance unit, is the ability to configure the luminaire lumen output to the application needed.

In other words, by simply rotating the selector knob located on the outside of the unit, the user may select a range from 1,250 to 25,000 lumens.

One universal high bay luminaire for multiple applications! Stylishly designed for commercial, retail, office space, warehousing, manufacturing or any large indoor space that requires high levels of lighting.

## FEATURES

### 2 Color Temperatures

4K & 5K

### 1 Finish

Grey

### Adjustable Lumen Output

Easily optimize light levels and wattage

### Aluminium PCB

Provides better heat conductivity for the LED and therefore longer lifespan

### Premium LED

Highly efficient EMC LED packages that offer extra savings and longer lifespan

### Warranty & LED Life

5-year warranty  
100,000-hour LED life

### DLC listed

DLC certified and tested to deliver superior energy efficiency

## Advantages of Dimming Control

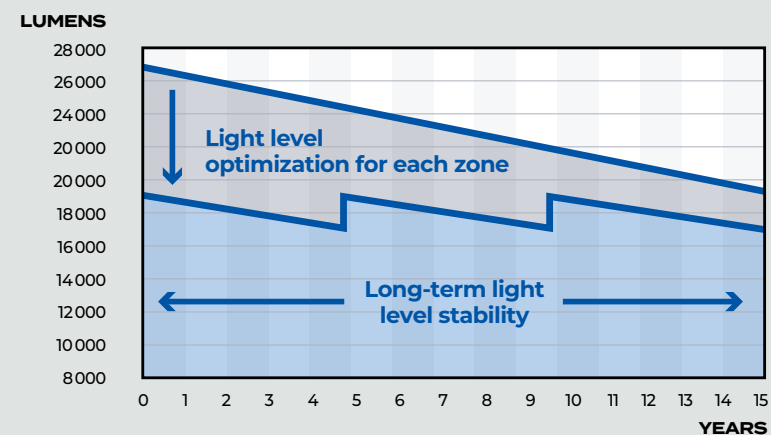
### LED BRIGHTNESS WILL DIMINISH OVER TIME

#### STEP 1

Set desired brightness at time of installation

#### STEP 2

Increase brightness when the illumination drops below the desired level



## UNIVERSAL HIGH BAY | LED

## KEY FEATURES

- Universal voltage 120 – 347V
- Adjustable lumens from 1,250 to 25,000
- 10-step field adjustable knob
- 150+ lumens per watt
- Elegant look with easy install
- Replaces 400W, 6-T8 or 4-T5HO high bays
- Beam angle 110°
- IP30

## FINISH



Grey

## SIZES & MODELS

**18"**

25000 LUMENS  
HB165

## COLOR TEMPERATURES

**4K•5K**

### 10-Step Field Adjustment Knob





# TAPE LIGHTS

## SPECIFICATION GRADE TAPE LIGHTS

The NDR Pinnacle collection of LED tape light offers industry specification grade technology at an affordable price. The combination of superior components and advanced LED chip technology is well suited for the lighting designer, architect, product specifier, electrician, and general contractor community.

This collection of LED tape lighting offers high lumen output, elevated color rendering indices, and market-leading LED binning criteria which ensures uniformity in both color and light intensity.

The Pinnacle series is available in a variety of different tunable options to accommodate any application, whether it be accent lighting, cove lighting, linear light, hallways, toe kicks, kitchen, under-shelf and undercabinet lighting, backlighting, soffit lights, gazebo lights, retail displays, and many more needs.

When the application calls for a high-end LED linear light look and performance, the Pinnacle Series is your answer.





# PINNACLE 350

## LED | SPECIFICATION GRADE 24V TAPE LIGHT

Pinnacle 350 Series LED tape light offers industry specification grade technology at an affordable price.

To ensure that our **CRI>94** color rendering and our high output lumen package of greater than 300LM/ft are always maintained, all our LEDs are selected using the 3-Step MacAdam binning criteria. This stringent protocol step ensures uniformity in both color and light intensity consistently across the entire run of lighting installed.

Suitable applications: kitchen cabinets, shelves, toe kicks, cove lighting & more.

### KEY FEATURES

- Full range dimmability
- 3oz Copper** per sq. ft. – Specification Grade
  - Thicker layer offers less electrical resistance and voltage drops
- CRI>94**
- 3-Step MacAdam LED binning
- Cuttable every 4"
- Maximum run – 26ft (8m)
- 3M™ mounting tape
- IP20 rated – Dry location

### SIZES & MODELS

#### 16.4' (5m)

316 LUMENS/FT  
TL350-24V-27K

322 LUMENS/FT  
TL350-24V-3K

339 LUMENS/FT  
TL350-24V-4K

#### 98.4' (30m)

322 LUMENS/FT  
TL350-24V-3K30



# PINNACLE 600

## SPECIFICATION GRADE 24V TAPE LIGHT | LED

Pinnacle 600 Series LED tape light offers industry specification grade technology and is well suited in applications which are exposed to moisture.

It features a thin **Nano-Skin coating technology** giving this product a durable protective layer and an IP54 damp location rating.

To ensure that our **CRI>94** color rendering and our **high output lumen package of greater than 550LM/ft** are always maintained, all our LEDs are selected using the 3-Step MacAdam binning criteria.

This stringent protocol step ensures uniformity in both color and light intensity consistently across the entire run of lighting installed.

Indoor applications: kitchen cabinets, bathroom vanities, large coves, hallways, architectural designs.

Outdoor applications: covered gazebos, roofed patios or any protected areas not exposed to direct contact with water.

### KEY FEATURES

- Full range dimmability
- 3oz Copper** per sq. ft. – Specification Grade
  - Thicker layer offers less electrical resistance and voltage drops
- ULTRA bright - 563 lumens/ft**
- CRI>94**
- 3-Step MacAdam LED binning
- Cuttable every 2.8"
- Maximum run – 16.4ft (5m)
- 3M™ mounting tape
- IP54 rated – Damp location**

### SIZES & MODELS

#### 16.4' (5m)

563 LUMENS/FT  
TL600-24V-3K  
TL600-24V-4K



**Nano-Skin Technology**  
IP54 rated for damp locations





# PINNACLE 360

LED | SPECIFICATION GRADE 24V TAPE LIGHT

NDR Pinnacle 360 Series LED tape light offers industry specification grade technology at an affordable price. It features a **continuous COB design to eliminate hot spots**.

The reinforced back design was engineered to strengthen the LED connection and improve heat dissipation while providing increased flexibility.

Gold plated solder pads provide exceptional electrical connectivity and are corrosion free.

Well suited for areas with low clearance or reflective surfaces.

## KEY FEATURES

### COB Design - No Hot Spots

- Ultra FLEX - Minimum Radius of 20mm (0.8")
- Reinforced back design
- 3-Step MacAdam LED binning
- Full range dimmability
- Cuttable every 2"- gold plated solder pads
- Maximum run - 16.4ft (5m)
- 3M™ VHB mounting tape
- IP20 rated - Dry location

## SIZES & MODELS

### 16.4' (5m)

388 LUMENS/FT  
TL360-COB24V-3K

416 LUMENS/FT  
TL360-COB24V-4K

**Ultra Flex**  
6x tighter radius permitted

### Continuous COB Design

Flawless light output with no pixelated hot spots

**Ultra Flex**



# PINNACLE 250

SPECIFICATION GRADE 24V TAPE LIGHT | LED

NDR Pinnacle 250 Series LED tape light offers industry specification grade technology and is engineered for the **extra-long run applications**. This product features temperature sensing and **constant current IC** chips that ensure an even consistent light output in long run applications.

As an added plus, installation costs are reduced by requiring fewer drivers and separate runs. Ideal applications: ambient and close level task lighting. Well suited for longer applications such as hallways, toe kicks, coves, display cases and more.

## KEY FEATURES

### Constant current IC chips

- For reduced drop in voltage & light output
- 4oz Copper** per sq. ft. - Specification Grade
- Thicker layer offers less electrical resistance and voltage drops
- 3-Step MacAdam LED binning
- Full range dimmability
- Cuttable every 2"
- 3M™ mounting tape
- Maximum run - 32.8ft (10m)**
- IP20 rated - Dry location

## SIZES & MODELS

### 32.8' (10m)

236 LUMENS/FT  
TL250-CC24V-3K  
TL250-CC24V-4K

### Constant Current IC

Ensures every LED receives the same specific amperage level, providing consistent light output and color



# PINNACLE 200

LED | SPECIFICATION GRADE 24V TAPE LIGHT

NDR Pinnacle 200 Series LED tape light offers industry specification grade technology providing a full range of colors, including RGB and adjustable CCT. It also includes a wide range of white light spectrum, ranging from the warm 1800K to very cool 6500K color temperature. It features a thin **Nano-Skin coating technology** giving this product a durable protective layer and an IP54 damp location rating.

Well suited in applications which are exposed to moisture, such as: hospitality or residential bar designs, covered gazebos, roofed patios, indoor marine boat installations, or any protected areas not exposed to direct contact with water.

## SIZES & MODELS

**RGB & Tunable White CCT from 1800K to 6500K**  
**Full** range dimmability with NDR controller  
**3oz Copper** per sq. ft. – Specification Grade  
 • Thicker layer offers less electrical resistance and voltage drops  
**CRI>94**  
 3-Step MacAdam LED binning  
 Cuttable every 4"  
 Maximum run – 16.4ft (5m)  
 3M™ mounting tape  
**IP54 rated – Damp location**

## SIZES & MODELS

**16.4' (5m)**  
 198 LUMENS/FT  
 TL200-RGB-24V

**RGB & Tunable White**  
 From 1800K-6500K and everywhere in between

**Nano-Skin Technology**  
 IP54 rated for damp locations



# PINNACLE 400

SPECIFICATION GRADE 120V TAPE LIGHT | LED

## KEY FEATURES

**Direct wire 120V – Driverless**  
**Maximum run – 100ft (30.5m)**  
 3-Step MacAdam LED binning  
 Includes snap-in mounting clips for every 2ft  
**IP65 rated – Wet location**

## SIZES & MODELS

**30' (9.1m)**  
 414 LUMENS/FT  
 TL400-120V-3K30FT

**100' (30.5m)**  
 414 LUMENS/FT  
 TL400-120V-3K

NDR Pinnacle 400 Series LED tape light offers industry specification grade technology and is rated for **120V** input, **thus eliminating the need for a separate driver.** It has been designed with a PVC extrusion coating giving it an IP65 rating for wet location applications. It has also been engineered with a constant current and over voltage protection for added light consistency and safety.

With a direct wire connection and a maximum run of 100 feet, this product allows for varied installation application options indoors or outdoors in wet or humid areas.

Ideal applications: hospitality or residential coves, display cases, gazebos, patios, soffits, or any areas which may be exposed to direct contact with water.

## Direct Wire 120V



**Waterproof**  
 IP65 PVC enclosure





# PINNACLE COMPONENTS

VERSATILE PARTS FOR EASY INSTALLATION

## 2-PIN CONNECTORS



**TL-CTT-2-10**  
2-Pin tape-to-tape connector  
(10mm)



**TL-CTW6-2-10**  
2-Pin tape to 6" wire lead  
connector (10mm)



**TL-CJOIN6-2-10**  
2-Pin tape-to-tape joiner with  
6" wire lead (10mm)



**TL-STT-2-10**  
2-Pin screw connector, tape-to-tape  
connector (8-10mm)



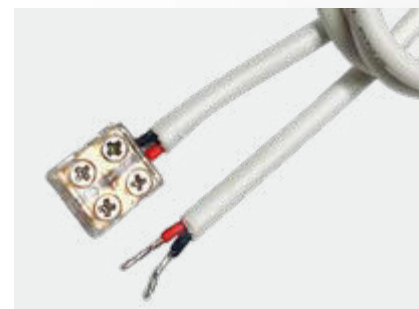
**TL-STW8-2-10**  
2-Pin screw connector, tape to 8"  
wire lead (8-10mm)



**TL-SJOIN8-2-10**  
2-Pin screw connector, tape-to-tape  
with 8" wire lead (8-10mm)



**TL-SLTT-2-10**  
2-Pin screw connector, tape-to-tape  
L-corner (8-10mm)



**TL-EXT6FT-2-10**  
2-Pin Screw Connector -  
6FT Extension



## 6-PIN CONNECTORS



**TL-CTT-6-12**  
6-pin tape-to-tape connector  
(12mm)

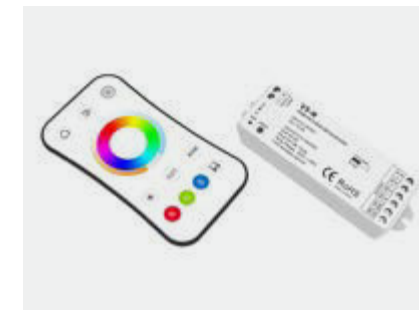


**TL-CTW6-6-12**  
6-Pin tape to 6" wire lead connector  
(12mm)



**TL-CJOIN6-6-12**  
6-Pin tape-to-tape joiner with  
6" wire lead (12mm)

## CONTROLLER



**TL-RGB-CTRL**  
RGB and tunable white controller  
with remote 3A x 5 channels  
(15A Max)



**TL-CLIP120V**  
Mounting clip for 120V tape light  
(51 clips included with every 100FT reel)



**TL-EC120V**  
End cap for 120V tape light

## 120V ACCESSORIES

## CHANNELS



**TL-CHAN-ALU**  
42" Aluminum extrusion with lens



**TL-CHAN-CLIP**  
Flat mounting clip for  
TL-CHAN-ALU



**TL-CHAN-ENDCAP**  
End caps for TL-CHAN-ALU

# PINNACLE COMPONENTS

## LED | 24V DRIVERS

The 24V drivers offered have the highest quality and reliability specifications currently offered in the LED strip market. High performance, wide-range voltage input, versatile dimming compatibility (TRIAC, forward phase, reverse phase, **MLV, or ELV**), compact size and wet rated, these units have been tested carefully to ensure years of maintenance-free usage.



### SPECIFICATIONS

Model	TLD24V-30W	TLD24V-60W	TLD24V-96W	TLD24V-192W	TLD24V-288W	TLD24V-25W	
<b>Certificates</b>	UL cUL Class2 FCC					cETLus Class 2 FCC	
<b>Output</b>	DC Voltage	24V					24V
	Rated Current	1.25A	2.5A	4A	2 x 4A	3 x 4A	1.04A
	Rated Power	30W	60W	96W	192W (2 x 96W)	288W (3 x 96W)	25W
<b>Input</b>	Voltage Range	100-277VAC					100-130VAC
	Frequency Range	47-63Hz					47-63Hz
	Power Factor (Typ.) @ full load	0.99@120VAC 0.97@277VAC	0.98@120VAC 0.95@277VAC	0.98@120VAC 0.96@277VAC	0.99@120VAC 0.94@277VAC	0.99@120VAC 0.95@277VAC	0.65@120VAC
	THD (Typ.) @ full load	<20%					<20%
	Efficiency (Typ.) @ full load	79%	83%		87%@120VAC 89%@277VAC		84%
	AC Current (Max.)	0.5A@100VAC	0.9A@100VAC	1.3A@100VAC	2.9A@100VAC	2.6A@100VAC	0.9A@100VAC
	Leakage Current	<0.50mA					<0.50mA
<b>Environment</b>	Working Temperature: -40~ +60°C (-40~+140°F)						
<b>Others</b>	Net. Weight	2.1 lbs / 0.95Kg	2.4 lbs / 1.1Kg	2.8 lbs / 1.3Kg	4.85 lbs / 2.2Kg	5.40 lbs / 2.45Kg	0.5 lbs / 0.95Kg
	Size	6.5" / 165mm (L) x 3.7" / 94.5mm (W) x 1.6" / 40mm (H)	7.4" / 188mm (L) x 3.7" / 94.5mm (W) x 1.6" / 40mm (H)	8.7" / 220mm (L) x 3.7" / 94.5mm (W) x 1.6" / 40mm (H)	10.9" / 277mm (L) x 4.3" / 109mm (W) x 1.8" / 45mm (H)	11.9" / 302mm (L) x 4.3" / 109mm (W) x 1.8" / 45mm (H)	6.1" / 155mm (L) x 2.1" / 54mm (W) x 0.8" / 20mm (H)



TLD24V-25W

The Pinnacle Series 24V driver has been designed for projects where low wattage or smaller runs are required. The compact size and a profile height of less than 1" allows for several discrete installation applications. It meets all requirements for Class 2 certification and is the recommended driver for use with our 24V Pinnacle Series puck lights and LED tape light. The 5% minimum load requirements of 1.25W allows for projects requiring as little as one PL24V-WH and at the maximum load it can power up to 12 puck lights.



# PINNACLE COMPONENTS

## 24V DIMMER+DRIVER | LED

### 2-IN-1 Dimmer+Driver

Dimmer & driver in a single device to eliminate compatibility issues. No additional driver is required.



The 24V Dimmer + Driver simplifies LED installations of any 24V constant voltage tape lights, under cabinet or downlights alike. The dimmer and driver combo eliminates the compatibility issues by combining both components in a single device. It fits in a standard recessed electrical box with a smooth dimming range of 100%-1%.

Model	Input Voltage	Max Wattage Output	Max Output Current	Output Voltage	Dimming Range	THD	Power Factor
TLDDIM24V-100W	120 VAC	100 W	4.2 A	24 V	1%-100%	<20%	>0.9



# UNDER CABINETS

## ENERGY-EFFICIENT UNDER CABINET LIGHTING SOLUTIONS

NDR Lighting's under cabinet lighting options are energy efficient and feature the very latest in LED technology. Known for their affordable design, our products are the perfect solution for a varied assortment of under cabinet lighting applications.

Offered in a variety of styles, sizes and designs, our LED under cabinet products are designed for quick and easy installation. Well suited for kitchen under cabinet or workstation applications, these units will provide years of maintenance-free functionality.



### FINISH



White

The Lucia series offers a cost-effective LED lighting solution with multiple knockout locations for easy and quick installation. It includes a diffused frosted lens, which allows for an even light distribution.

Ideal for use under cabinets, closets, work stations and more.

### SIZES & MODELS

**8"**

300 LUMENS  
UNL50DIM-CCT-8

**12"**

450 LUMENS  
UNL50DIM-CCT-12

**21"**

1000 LUMENS  
UNL50DIM-CCT-21

**30"**

1250 LUMENS  
UNL50DIM-CCT-30

**40"**

1800 LUMENS  
UNL50DIM-CCT-40

### COLOR TEMPERATURES



**3K•4K•5K**  
SELECTABLE

### KEY FEATURES

- 3 Color temperatures with selectable CCT switch
- Aluminum construction
- Integrated driver
- Large wiring cavity for easy wiring installation
- Multiple 1/2" knockout locations

### FINISH



White

The ISA series offers an under cabinet selection with elements of design and functionality with its subtle curves and swivel features. It can be easily mounted under a cabinet or on a wall and the diffused lens can be positioned at various angles up to 45° to highlight a beautifully tiled back splash or any wall feature of choice.

### KEY FEATURES

- 3 Color temperatures with selectable CCT switch
- Aluminum construction
- 45° Swivel
- Integrated driver
- Wiring cavity for easy wiring installation
- Multiple 3/8" knock-out locations

### SIZES & MODELS

**12"**

500 LUMENS  
UNS70DIM-CCT-12

**21"**

1100 LUMENS  
UNS70DIM-CCT-21

**30"**

1450 LUMENS  
UNS70DIM-CCT-30

### COLOR TEMPERATURES



**3K•4K•5K**  
SELECTABLE

### Range of Motion



Wide range of motion





# PUCK LIGHTS

LED | UNDER CABINET

## FINISH



White

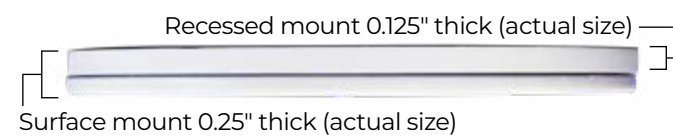
## SIZE & MODEL

**3"**

24V  
PL24V-3K

## COLOR TEMPERATURE

**3K**



Versatility is the name of the game when it comes to under cabinet lighting. Our new 24V puck lights allow countless options due to their ultra thin profile, low wattage and dimmable features.

You can mount them directly on a surface via the included mounting ring, or opt for a recessed installation. More importantly, they are fully compatible with our Pinnacle Series of 24V drivers.

## KEY FEATURES

Ultra thin profile :

- Surface mount (0.25" thick)
- Recessed mount (0.125" thick)

Dimmable

6FT wire lead

24V hard wire connection

Compatible with NDR Pinnacle Series 24V Drivers such as TLD24V-25W





# OUTDOOR SECURITY

## OUTDOOR ILLUMINATION SOLUTIONS

Our outdoor illumination solutions feature high-performance, energy-saving LED technology. Whether for security or general lighting applications, our LED fixtures are the ideal choice for any design or architectural requirement. From traditional twin-head LED outdoor motion sensor lights to dusk-to-dawn lights, our outdoor fixtures complement any home or building.





# EXCALIBUR

## LED | RESIDENTIAL TWIN-HEAD FLOOD

### FINISH



Dark bronze

White

The high-performance LED oval twin-head security light with motion sensor offers security and general lighting for outdoor residential applications.

Our sensor provides premium dual-zone detection with 200° wide angle in the forward direction and 80° downward angle to detect the movement closer to the home entry way or wall perimeter.

### MODEL

2400 LUMENS  
OS110LED



Premium  
Dual Zone  
Detection

80°

200°









Friction Tight  
knuckle design

### COLOR TEMPERATURES



3K•4K  
SELECTABLE

### KEY FEATURES

-  **Tool-free**  
Tool-free friction tight adjustments
-  **Rugged cast aluminum housing**  
Precision die-cast aluminum construction
-  **Controls**  
Sensitivity and on-time controls
-  **Adjustable photocell sensitivity**  
Adjustable photocell to control the sensitivity of the dusk-dawn feature
- 
-  **Premium PIR motion sensor**  
200° wide angle forward detection  
80° downward perimeter detection  
70' detection range  
Fully adjustable for ideal positioning

# SPRINGFIELD

## RESIDENTIAL TWIN-HEAD FLOOD | LED

### FINISH



White

Dark bronze

The high-performance LED oval twin-head security light offers security and general lighting for outdoor residential applications.




The integrated photocell sensor allows the light to automatically turn on at dusk and off at dawn providing the added security of illumination during the night.

### COLOR TEMPERATURES



3K•4K  
SELECTABLE

### KEY FEATURES

-  **Tool-free**  
Tool-free friction tight adjustments
-  **Rugged cast aluminum housing**  
Precision die-cast aluminum construction
-  **Adjustable photocell sensitivity**  
Adjustable photocell to control the sensitivity of the dusk-dawn feature



### MODEL

2400 LUMENS  
OS160LED



Friction Tight





# TRITON

## LED | HIGH POWER TWIN-HEAD FLOOD

### FINISH



Black



Dark bronze

### MODEL

4000 • 6000 LUMENS  
OS4600



Adjustable  
intensity



Friction Tight  
knuckle design

Offering our most powerful lumen output ever in such a compact form factor, the Triton definitely packs a punch.

Its twin-head design lets you light two different spaces with one light source and the adjustable photocell avoids wasting energy during daytime.

### COLOR TEMPERATURES



**4K•5K**  
SELECTABLE

### KEY FEATURES



**Tool-free**  
Tool-free friction tight adjustments



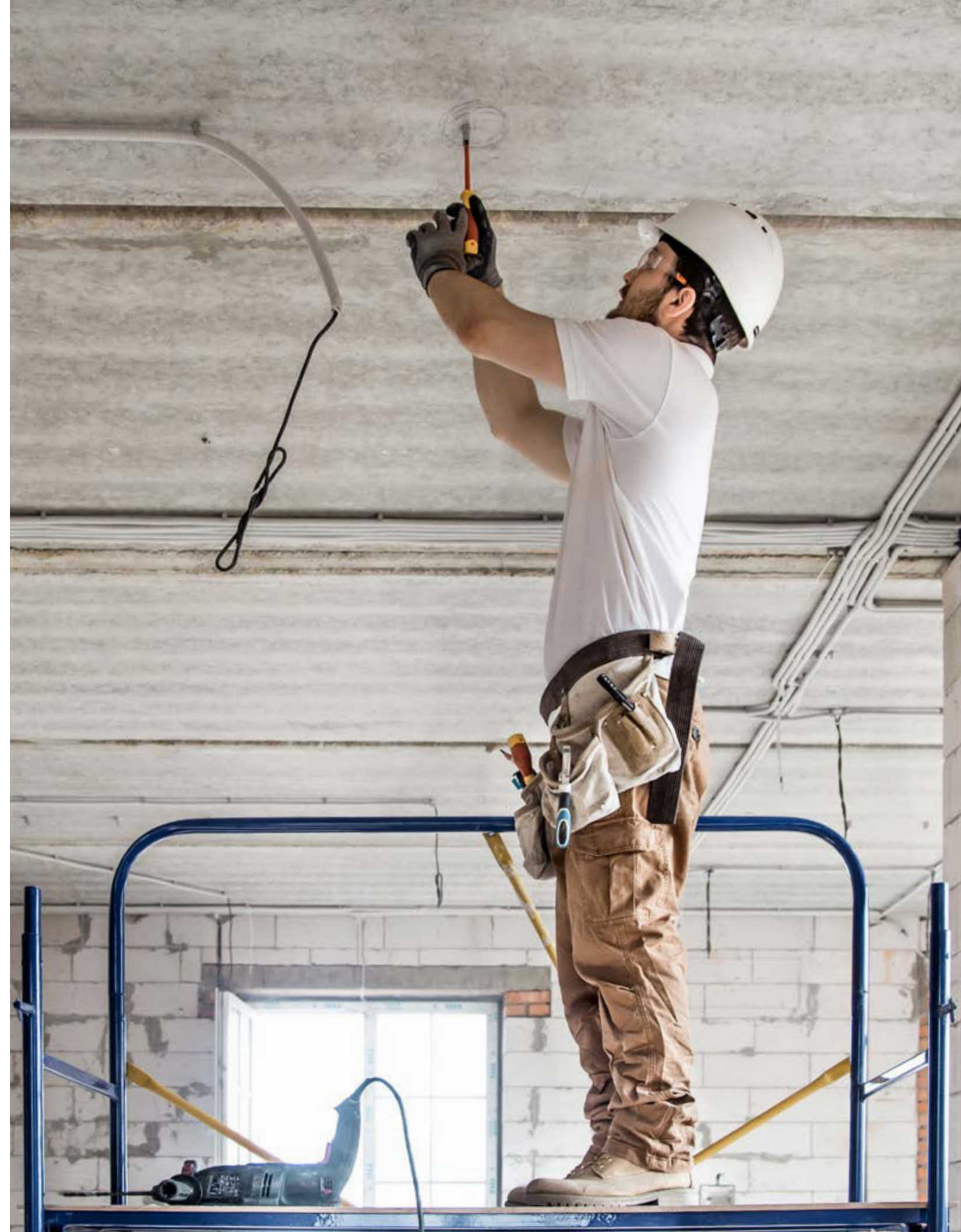
**Rugged cast aluminum housing**  
Precision die-cast aluminum construction



**Adjustable photocell sensitivity**  
Adjustable photocell to control the sensitivity of the dusk-dawn feature



**High Power**  
Selectable 6000 lumens high power option







### **NDR Lighting USA**

244 River Street  
Oneonta, NY 13820  
United States of America  
info@NDRlighting.com  
1 855 739 8228

### **NDR Lighting Canada**

102-2001 boulevard Des Sources  
Montréal, Québec, Canada  
H9K 5Z4  
info@NDRlighting.com  
1 855 739 8228

### **NDR Lighting Mexico**

Roble 133,  
La Soledad-ampliacion-,  
58100 Morelia, Mich., Mexico  
info@NDRlighting.com.mx  
443 255 0211

**NDRLIGHTING.COM**